

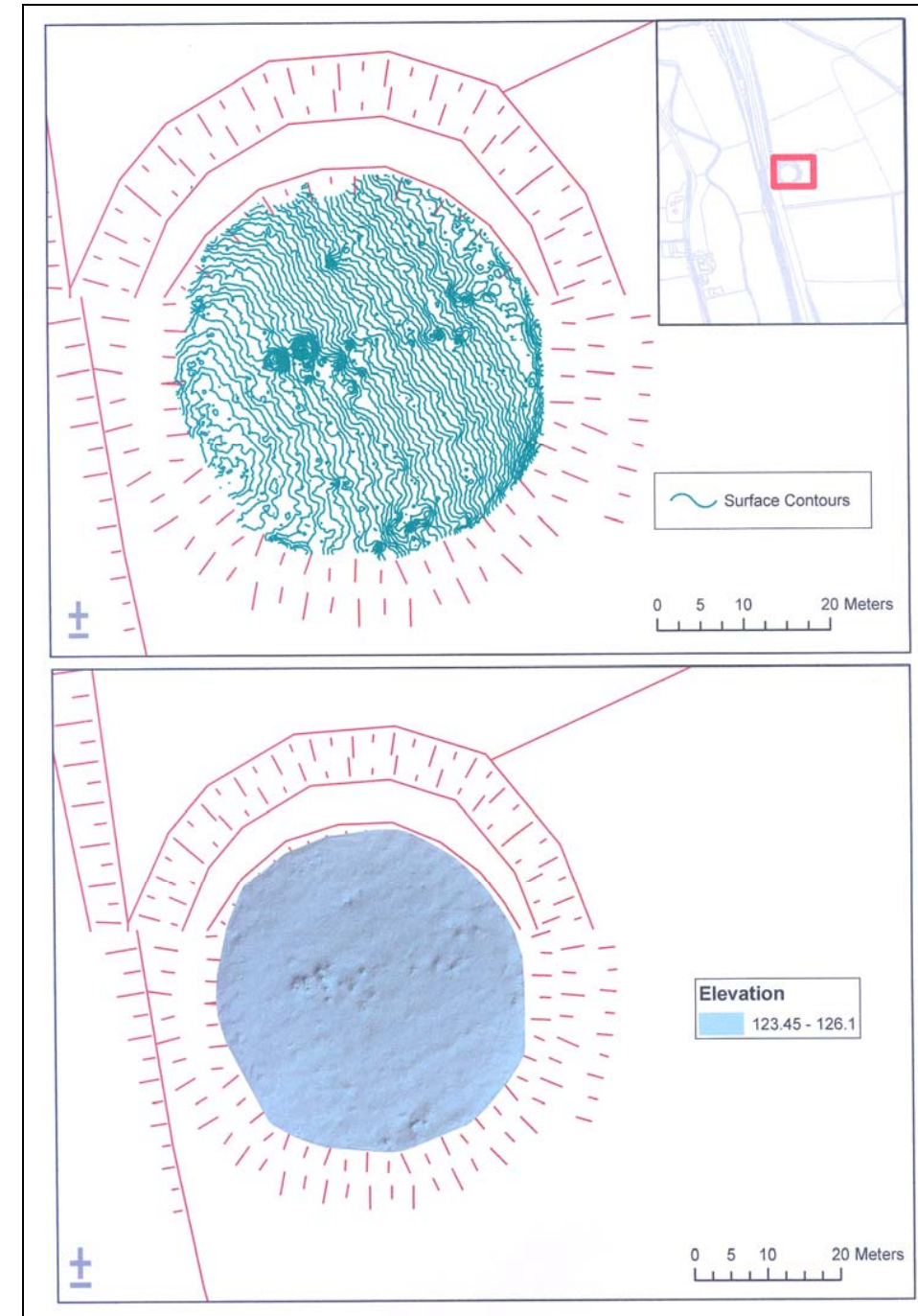
Appendix 15.7 Topographic Survey

APPENDIX 15.7

Targeted Topographical Surveys

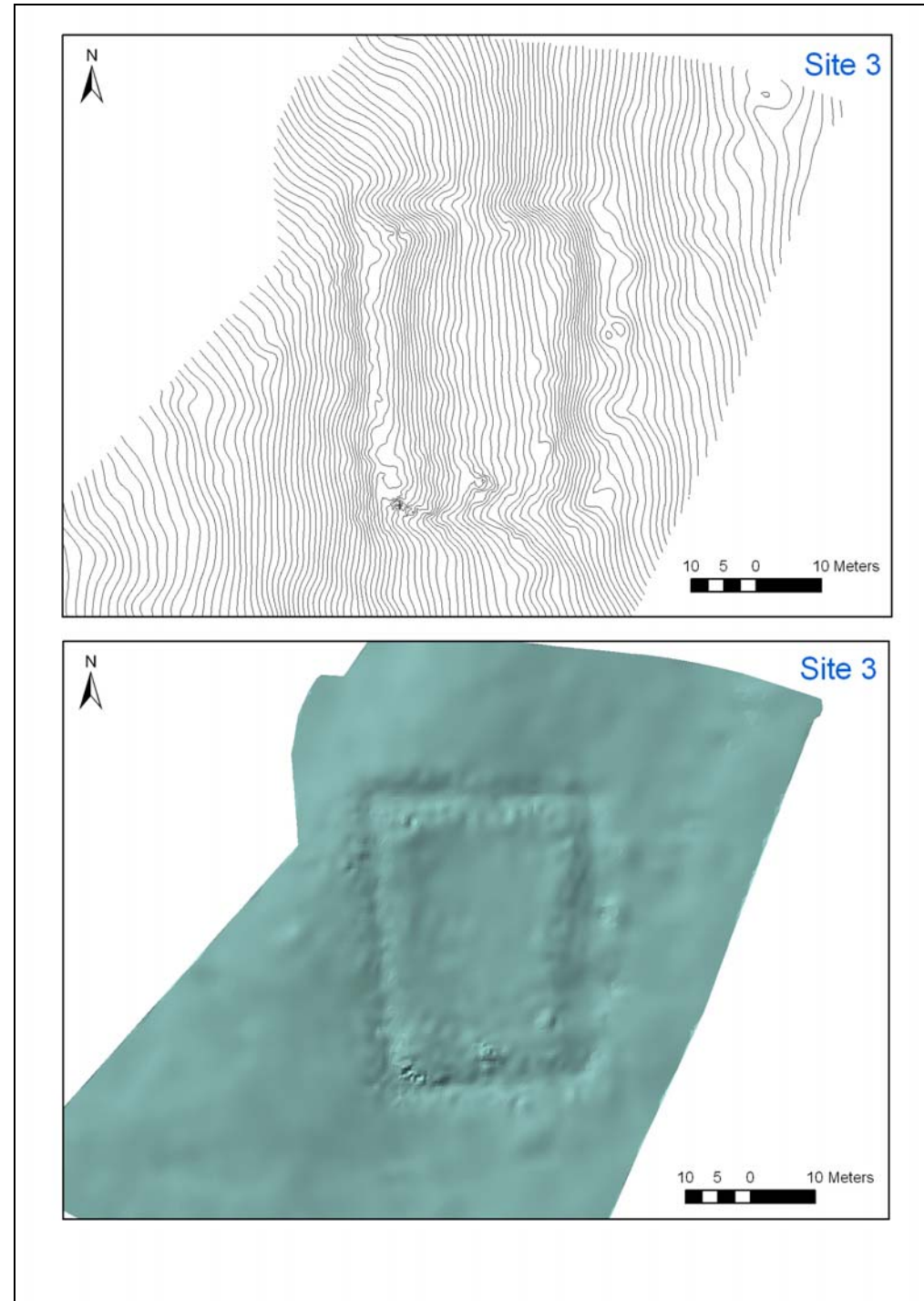
Topographical survey is useful in detecting minute variations in the ground surface. The use of topographical survey within archaeology can be an effective method of accurately recording known and potential archaeological sites, which may have a low, but measurable, topographical profile. The topographical survey was carried out by Cork County Council. A total of ten sites were surveyed. Two of these (CSS 0530 and CSS 0303) are known recorded archaeological sites and eight (CSS 2599, 2607, 2610, 2612, 2613, 2615, 2623, 2625) are potential sites identified through aerial survey and field inspection.

CSS 0303: Ringfort



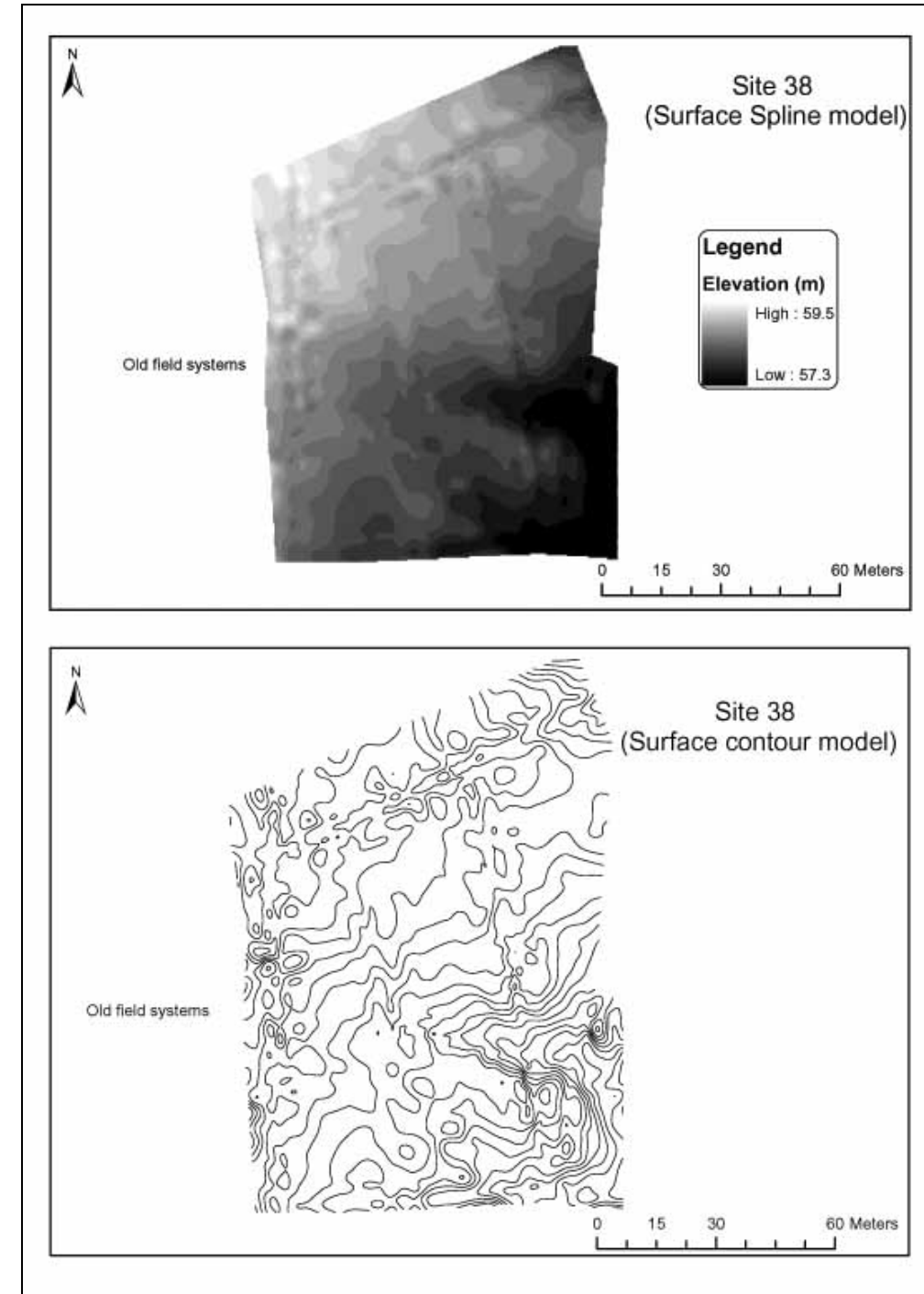
Comment: The topographic survey suggests the location of the souterrain running east west in the interior of the ringfort.

CSS 0530: Burial Site (Site 3)



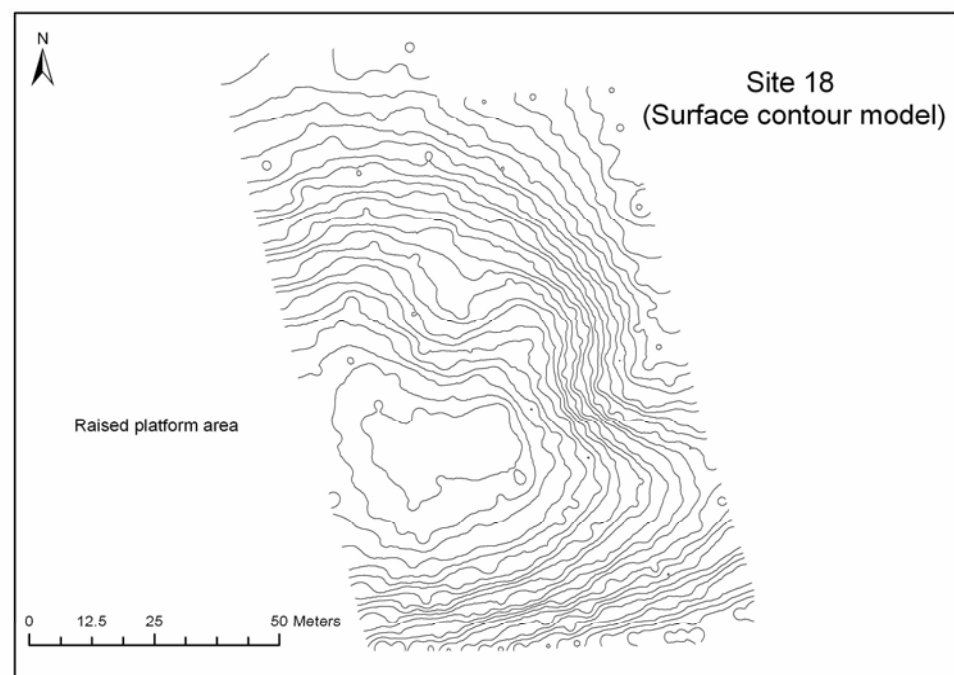
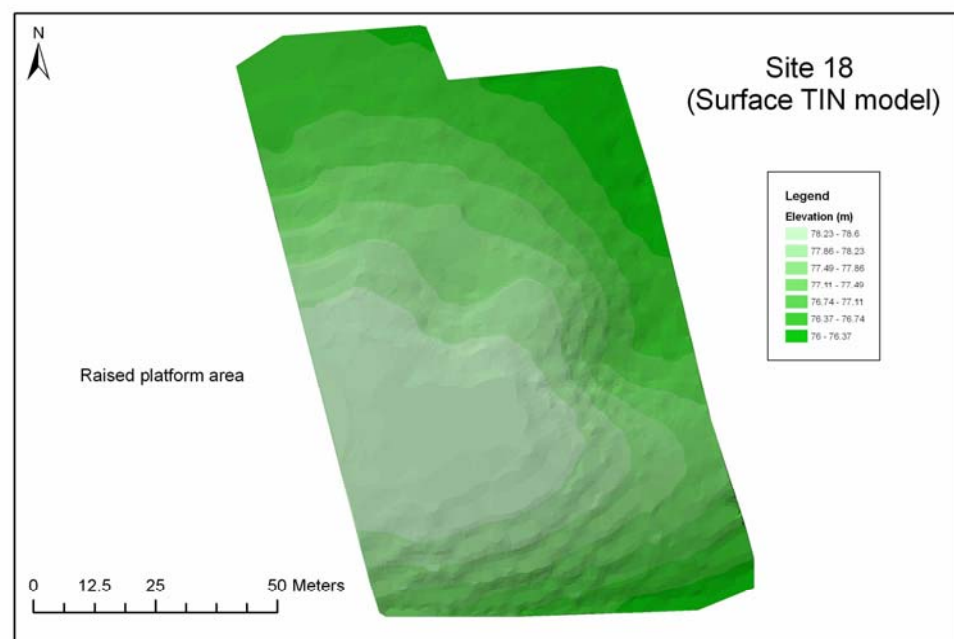
Comment: The topographic survey indicates the presence of the ditch enclosing a generally rectangular area. No evidence of a burial is apparent.

CSS 2599 (Site 38)



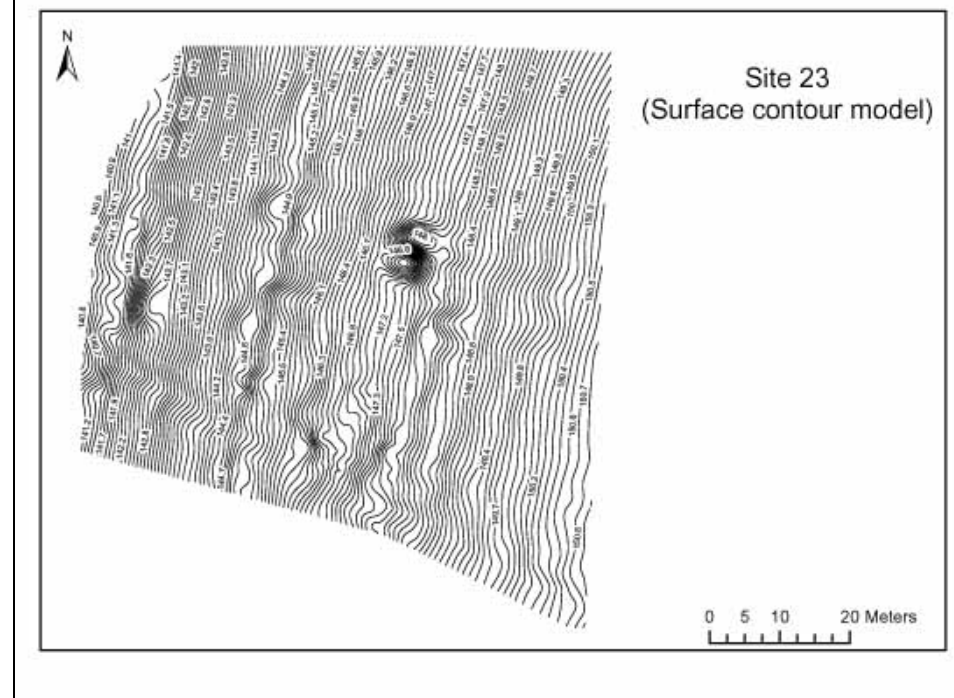
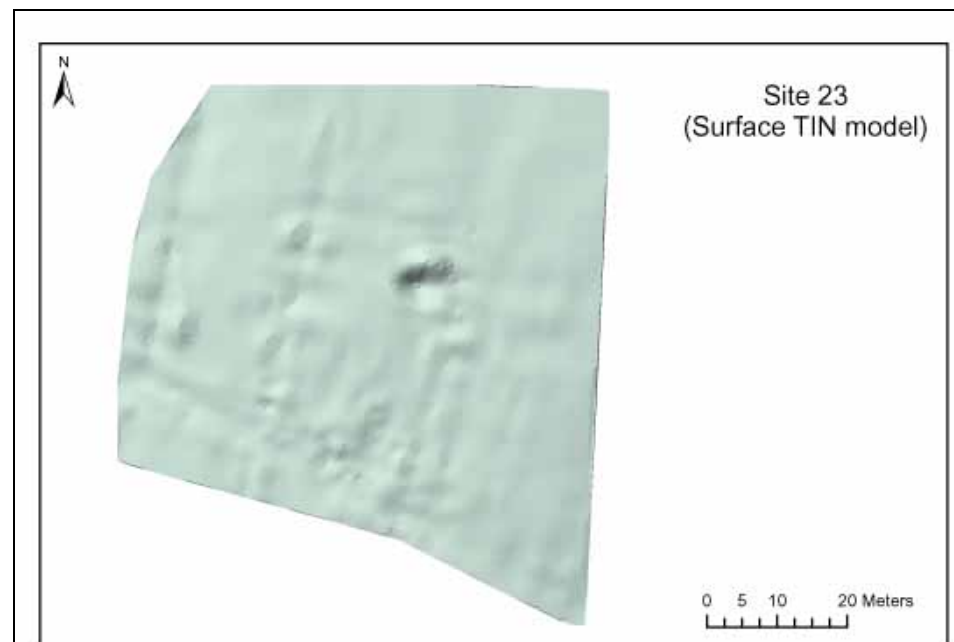
Comment: Topographic survey shows two north south enclosing elements with a similar feature at the northern end running northeast southwest suggesting the presence of buried field systems.

CSS 2607 (Site 18)



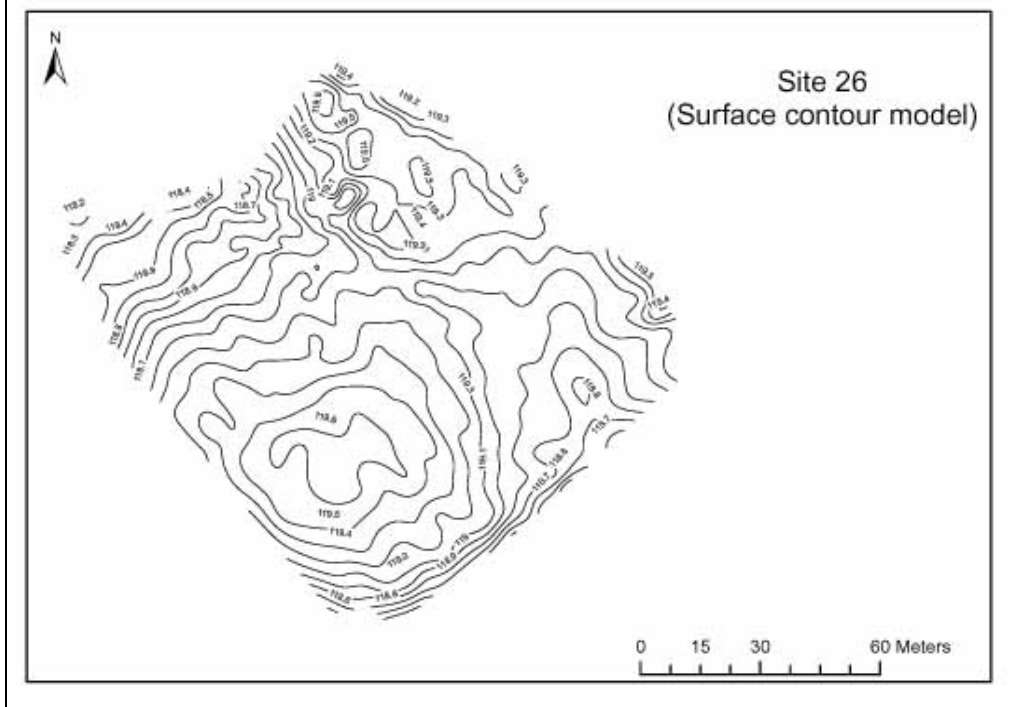
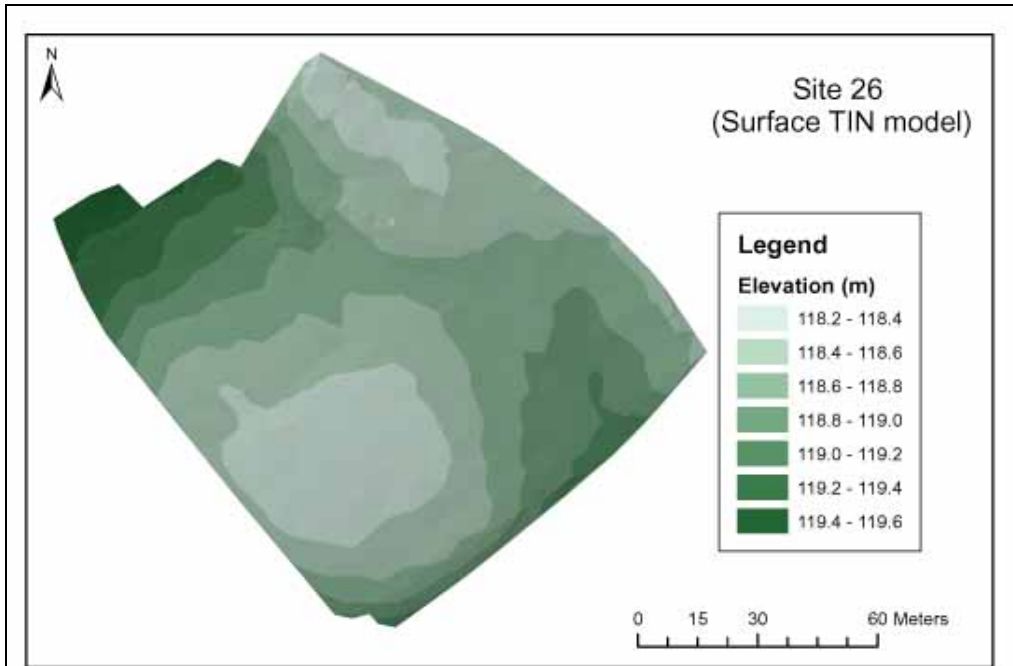
Comment: Topographic survey does not indicate the presence of buried archaeological features on this raised platform.

CSS 2610 (Site 23)



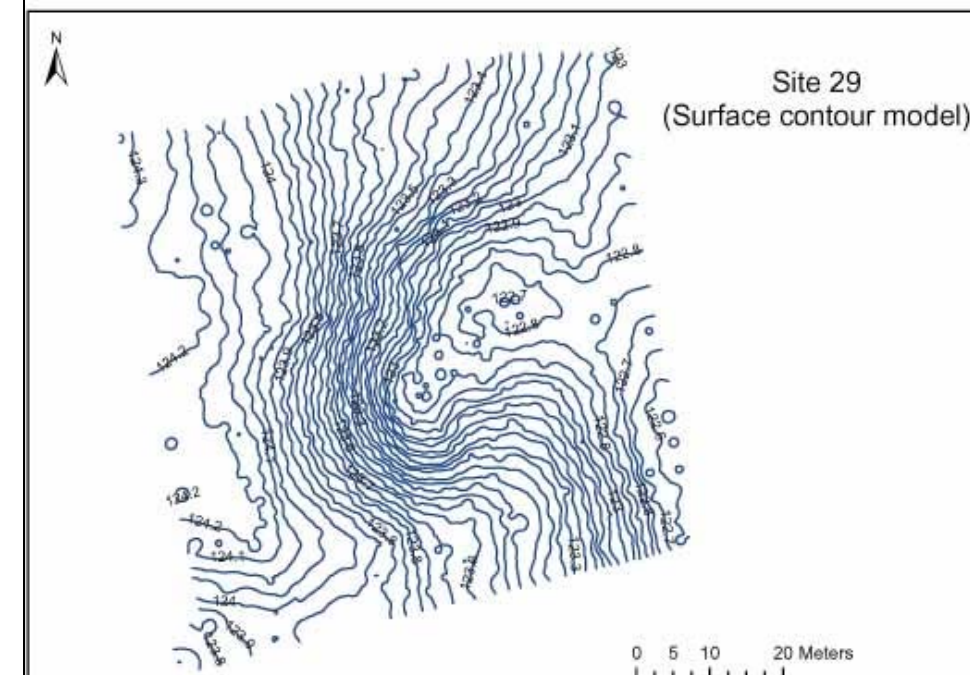
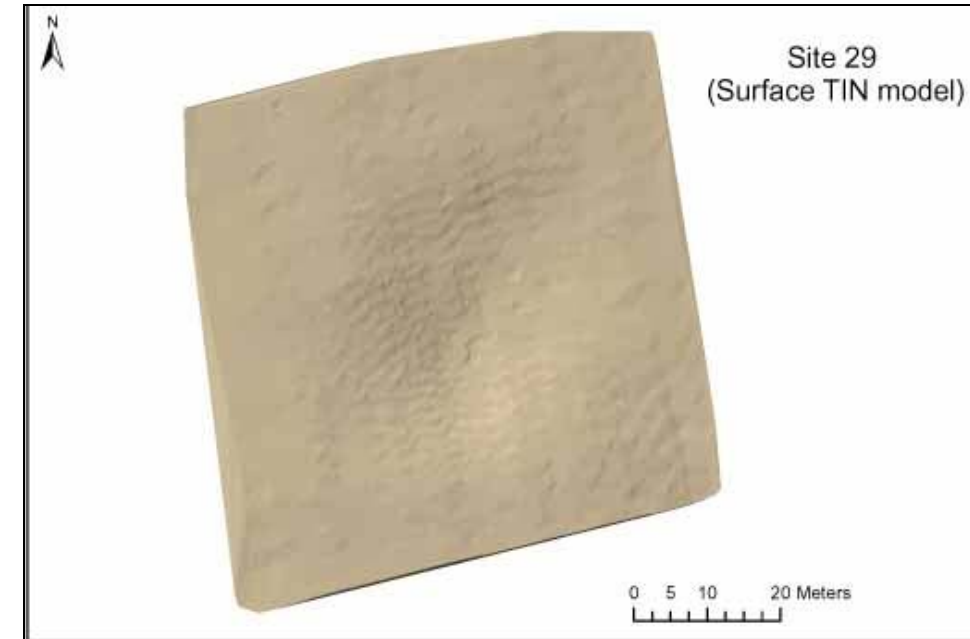
Comment: Topographic survey indicates a circular depression towards the centre of the image. There are also a number of north south enclosing elements apparent with a similar perpendicular feature at the southern end and the possibility of another north of the circular feature. These suggest the presence of buried field systems.

CSS 02612 (Site 26)



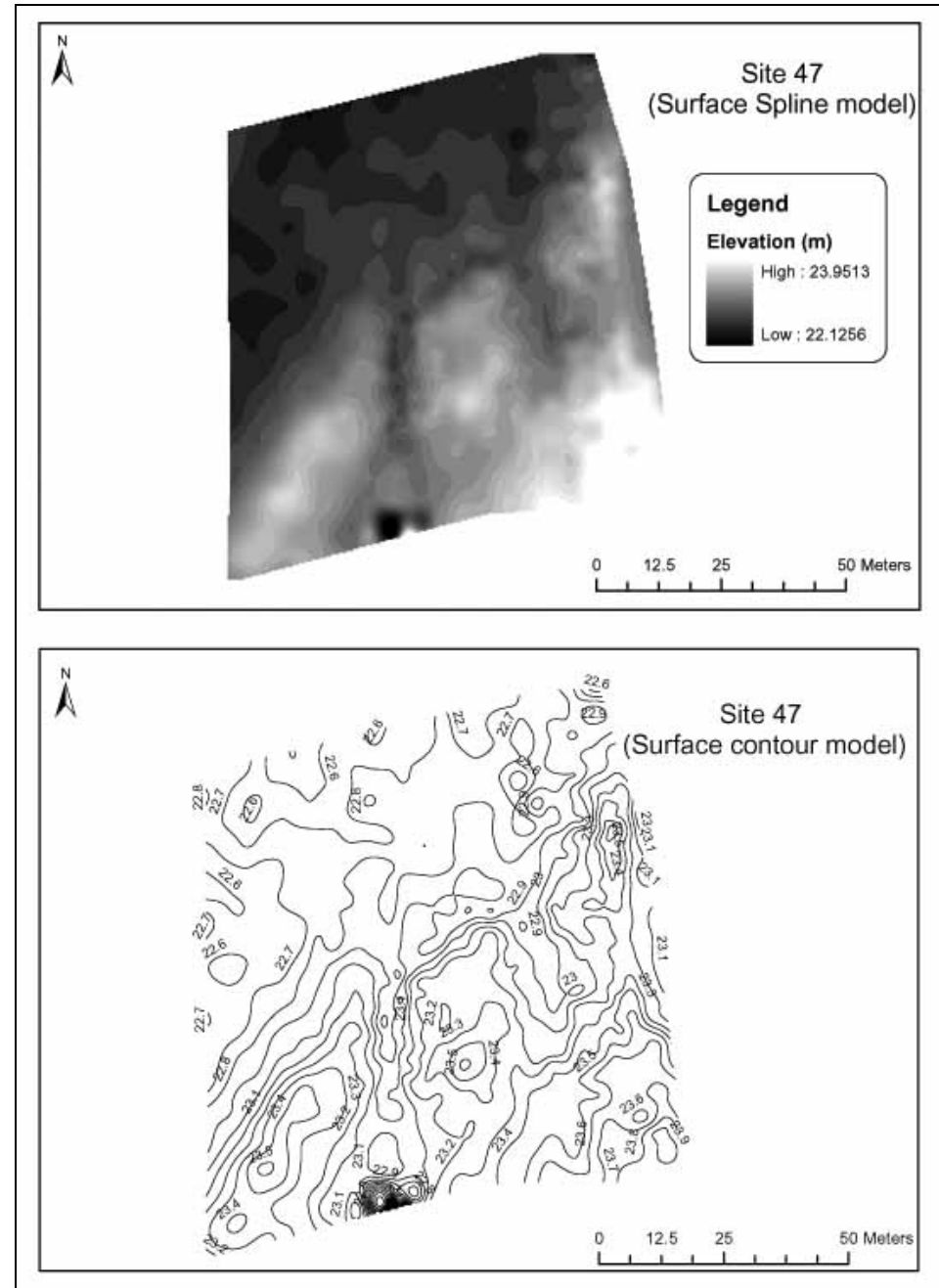
Comment: Topographic survey does not highlight the presence of buried archaeological features in this area.

CSS 2613 (Site 29)



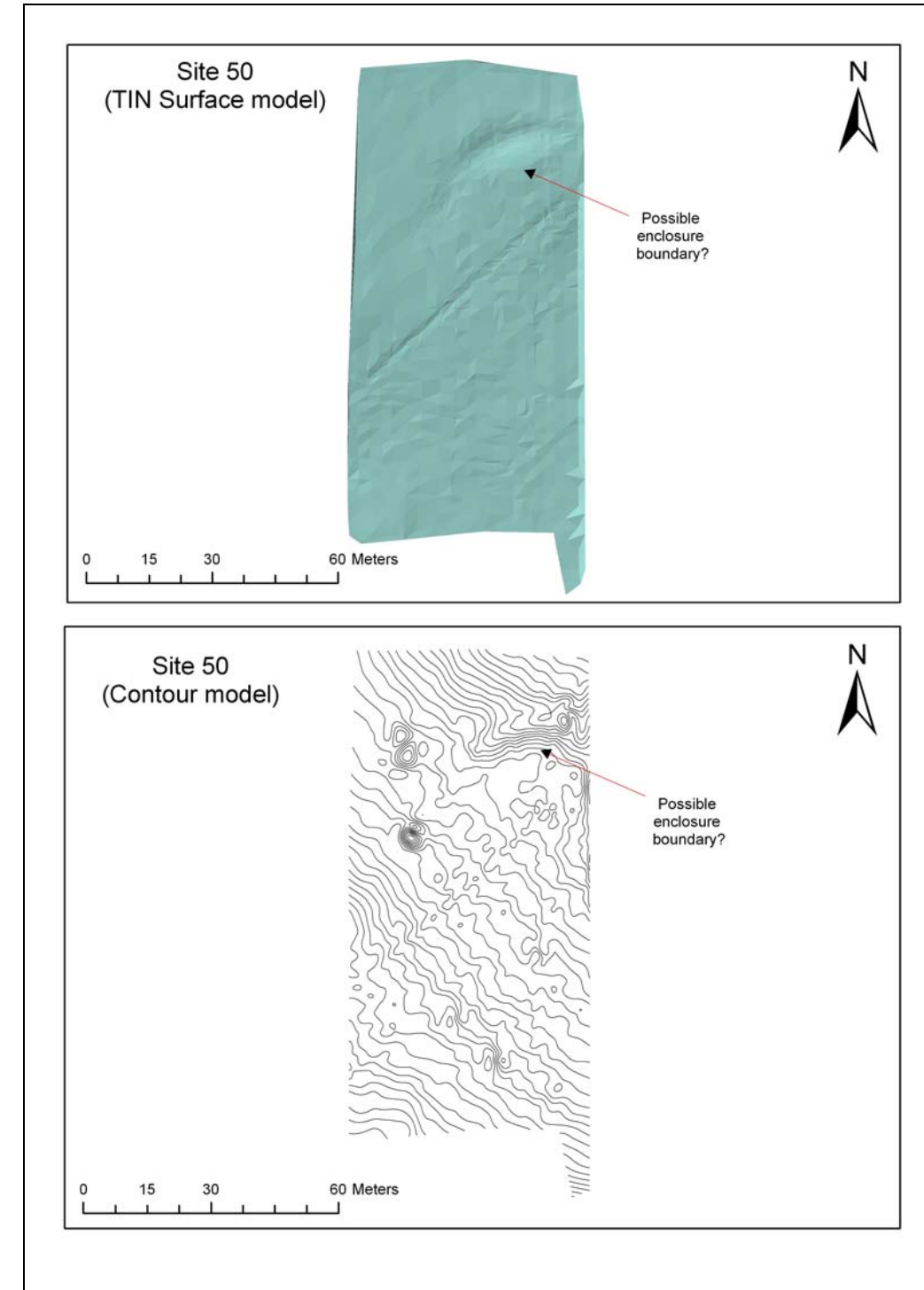
Comment: Topographic survey does not indicate the presence of buried archaeological features in this area.

CSS 2623 (Site 47)



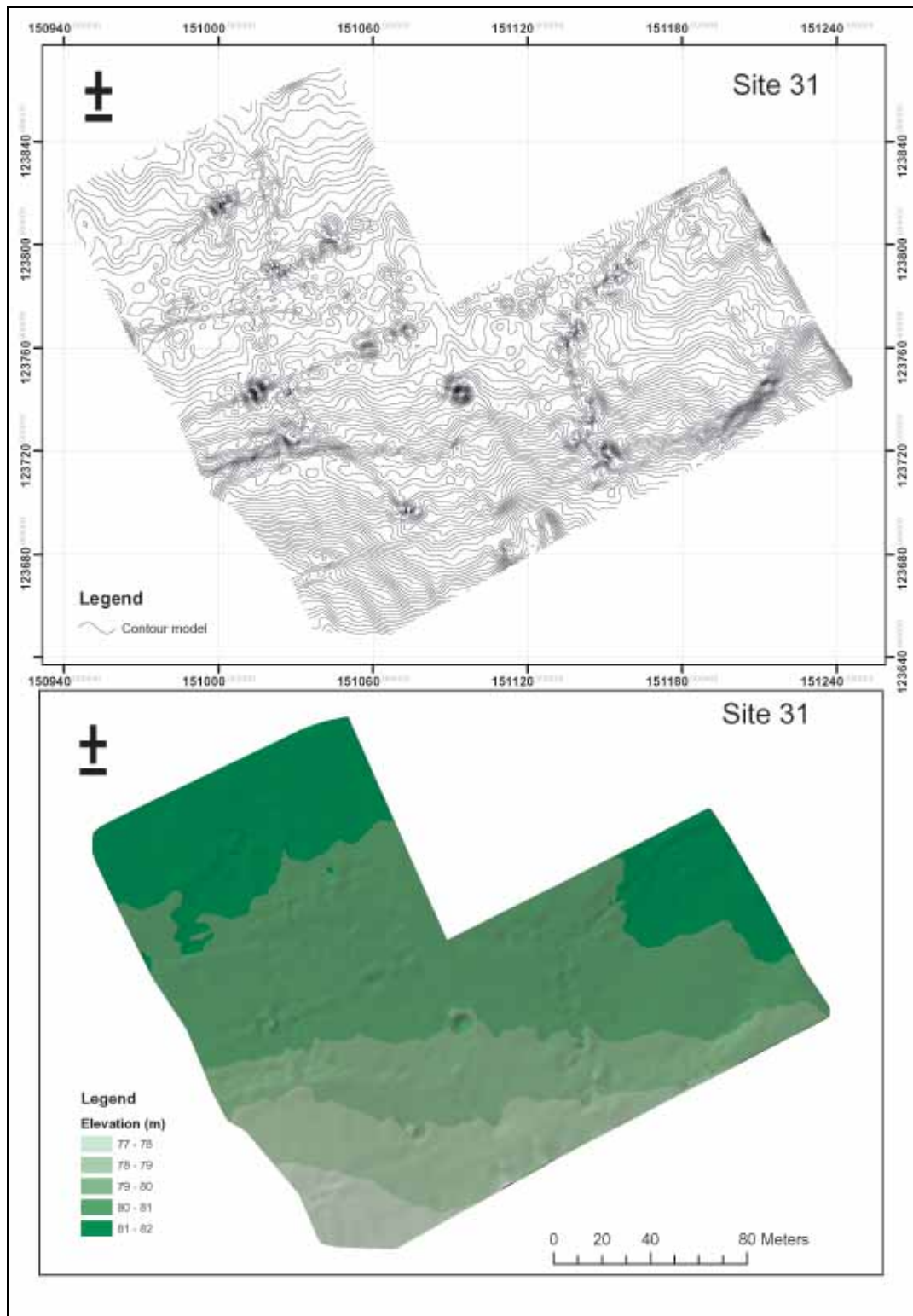
Comment: Topographic survey suggests the presence of two north south enclosing elements with a similar feature at the northern end suggesting the presence of buried field system.

CSS 2625 (Site 50)



Comment: Topographic survey indicates the presence of a portion of a curving ditch which may be part of an enclosure.

CSS 2615 (site 31)



Comment: The topographic survey shows a roughly circular enclosure to the east with a number of linear features as well as a possible semi-circular feature to the west.

